



CAPABILITY STATEMENT



PAGE 4

OUR COMPANY

OUR HISTORY

OUR COMMUNITY

PAGE 6

OUR SERVICES

OUR CLIENTS

PAGE 8

OUR PROJECTS

PAGE 10

THE WAY WE WORK

OUR TEAM

OUR VALUES

OUR SYSTEMS + QUALITY



OUR COMPANY

We are solutions-focused and dedicated to exceeding our client's expectations.

BOS Civil provides turn-key project management support to local government and private sectors across civil infrastructure, hard and soft landscaping, streetscaping, road works, concrete works and underground infrastructure ventures.

Led by a technically minded team with more than 45 years of collective experience, we offer a proactive and collaborative approach, tailored to the needs of our clients.

Our experienced senior team remains hands on across each of our projects, cementing our reputation for delivering high quality customer service and workmanship in all that we do.

Our approach is one of quality, transparency and team work. We are committed to delivering each project safely, on time and to the high standard that our clients expect.

**OVER 45 YEARS' COLLECTIVE EXPERIENCE IN
DELIVERING TOTAL TURN-KEY ENGINEERING
AND CONSTRUCTION SERVICES.**



OUR HISTORY

Established in 2010, BOS Civil has worked diligently to develop our expertise in local government and private sector civil works projects.

Today, we are recognised as a diverse, full-service civil and construction business specialising in complex projects in challenging environments. To date, this has included everything from civil infrastructure projects, road works, land development and concrete works, to stormwater and drainage systems, streetscapes and landscapes.

We are dedicated to building long-lasting relationships, and value broadening our experience and developing the skills of our staff.

The company has been built around the motto **'Built On Solutions'**. The foundation of our culture is to offer a solutions mindset on projects large and small, delivering a high level of service to our clients.

OUR COMMUNITY

BOS Civil contributes to the community through our professional memberships, affiliations and projects.

We are an active member of the Wanneroo and Joondalup Business Associations and continue to be a part of City of Perth's panel for Civil Construction and Maintenance, the panel for Building Service Connections, as well as WALGA's panel for Road Building and Civil Works.

We work hard to support and respect the environment and communities around us, and often work alongside Indigenous communities in our decision making and planning processes.



OUR SERVICES

Our complete service solution is backed by our commitment to reliability, responsiveness and quality.

The team at BOS Civil has the ability to deliver a total turn-key service. We are proud of the collaborative, diverse work we have completed across Western Australia. We promise to deliver best practice:

- Detailed planning and project scoping
- Procurement
- Control of airborne pollutants (ie. dust)
- Management of materials and equipment storage on site
- Mobilisation/initial works
- Traffic management
- Construction works
- Safe place of work
- Safe systems of work

We offer tailored engineering and project management support, technical experience and advice in the following areas:

CIVIL CONSTRUCTION

Full-service civil construction capabilities suited to complex projects.

- Pavement infrastructure construction
- Stormwater drainage
- Utility installation
- Concrete slab and footing construction
- Detailed earthworks
- Sump remediation

HARD AND SOFT LANDSCAPING

Landscaping options to suit a project's functional and aesthetic needs.

- Path and paving installation
- Soft scaping – organic shrubs, trees, mulch and reticulation
- Restoration and remediation

- Detailed earthworks
- Megaflow drainage installation

LAND DEVELOPMENT

Complete civil embankment protection services.

- Green title subdivisions
- Strata subdivision developments
- Retaining wall construction
- Feature brickwork and entrance statements
- Gabion walling
- Rock pitching

STREETSCAPING

Extensive experience and capabilities to deliver full streetscape enhancement.

- Granite and in situ concrete kerbing
- Full pavement construction and reconstruction
- Brick and decorative paving on rigid and flexible pavements
- Stormwater drainage
- Utility installation
- Concrete slab and footing construction
- Street furniture installation
- Decorative concrete
- Feature masonry walls
- Off-form concrete planters, seats and walls

UNDERGROUND INFRASTRUCTURE

Specialist skills and expertise to manage complex underground projects.

- NBN
- Underground power, communications and CCTV
- Stormwater drainage and water retention systems
- Sewer Reticulation
- Water reticulation



CLIENTS



OUR WORK

As civil engineering and construction specialists, we offer fully integrated and scalable solutions.

Our extensive experience allows us to deliver exceptional outcomes for projects of all sizes and configurations. Our expert senior team are able to provide total project solutions where others may not, working proactively to get the job completed to a high standard.

Our capabilities and experience include full streetscape enhancement, redevelopment, NBN installation and pedestrian zones. The ability to effectively work across diverse fields is a testament to our significant project experience and our staff's diverse knowledge, skill-sets and flexible approach.

We pride ourselves on being able to exceed our client's expectations and complete high-quality projects safely and on time.

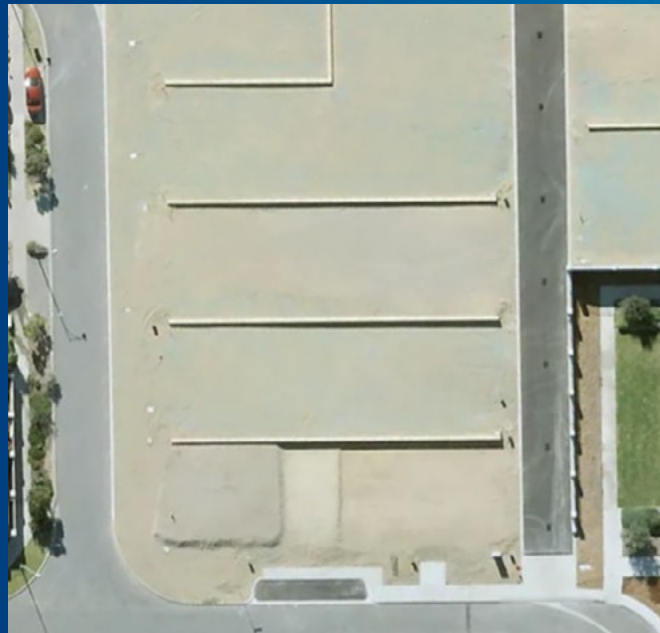


Ray Owen Carpark

City of Kalamunda
\$1.06M

Scope of works: Construction of a new 246 bay carpark at the Ray Owen Sports Complex including earthworks, stormwater drainage, electrical & communications services, pedestrian & trafficable paving, and soft landscaping.

Challenges and solution: The project was constructed over the top of solid laterite rock which made the installation of services, drainage and footings more challenging. Issues with design levels also resulted in BOS Civil taking over the design in consultation with the City of Kalamunda.



Benson Loop

Big Red Properties
\$515,000

Scope of works: Construction of a 5,200m², 15 Lot Strata Subdivision including sewer, stormwater drainage, power, communications and limestone retaining walls.

Challenges and solution: One 9-course retaining wall adjacent to the POS had to be redesigned by BOS Civil as the original design would not work with the tie-into the existing POS wall. The wall was also rendered and painted to match the existing finish on the existing POS walls. This project was time critical to meet Densford's impending completion date, and was delivered on time, despite the tight mobilisation window, to our client expectations.



QEII F Block

BMW
\$1.7M

Scope of works: Construction of a new 35 bay carpark and piazza area involving demolition, land development, underground works, feature paving and wall construction, soft landscaping, and furniture installation.

Challenges and solution: Situated between the ER entrance and an outpatient building at a major public hospital the project required significant management of pedestrian, vehicles and stakeholders. Pedestrian walkways were required to ensure operations could continue, and an 1800mm wide Emergency Access perimeter set up in case of emergency evacuation. The project also involved demolition and reconstruction of the G block foyer during a 5.5hr window at night, ensuring it was pedestrian safe again by the morning.



North Perth Common

City of Vincent
\$680,000

Scope of works: Construction of concrete feature walls and paving, soft landscaping, installation of drainage, electrical and communications services, design and construction of a bespoke artworks structure.

Challenges and solution: Located on a busy intersection with major stakeholders each side the project was constructed under a full road closure. BOS Civil were able to perform all the civil works three weeks early and re-open the road, then come back a few weeks later to close the road down for only 2 days so that the custom fabricated artwork structure could be craned into position.



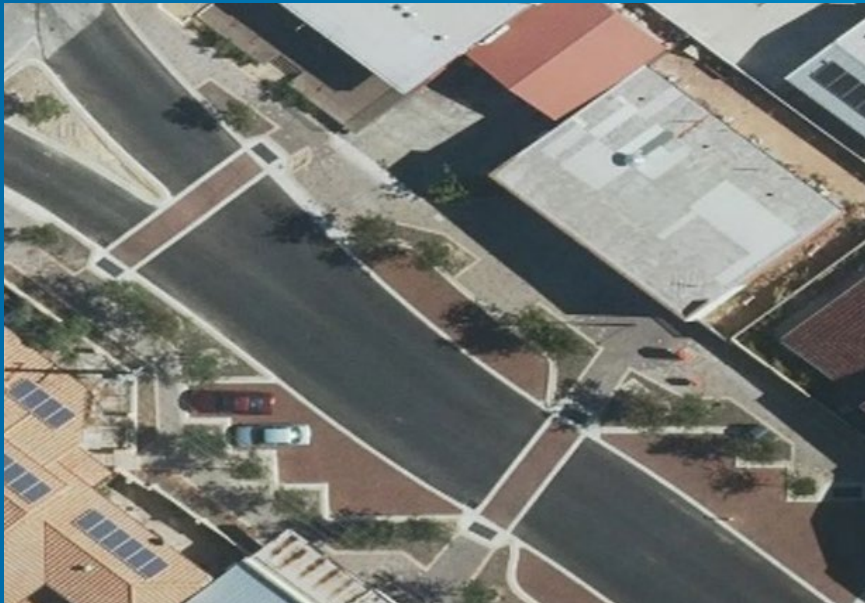
Longreach Bay Stair Upgrade

Rottnest Island Authority

\$200,000

Scope of works: Removal of existing dilapidated sets stairs and design and construction of new limestone block stairs.

Challenges and solution: Significant planning around movement of material, personnel and equipment to and from the island was required during the works due to the complex logistic requirements of working on an island. Through the careful management of our work program and logistics we completed the works within the required timeframe and kept to our program of works.



Etwell St Revitalisation

Town of Victoria Park

\$650,000

Scope of works: The transformation of Etwell St local centre to create a revitalised streetscape area including demolition, earthwork, stormwater drainage, electrical and communications services, soft landscaping, pedestrian and trafficable paving and permeable paving parking bays.

Challenges and solution: Significant planning and staging was required to accommodate the numerous affected stakeholders including shop owners, residents, pedestrians and traffic. In addition BOS co-ordinated future planned Western Power underground service works to be undertaken concurrently, reducing disruption and removing the need to excavate completed works in the future to accommodate these services.



**EQUIPPED TO
SUCCEED**

OUR PEOPLE

We have a senior team of experienced professionals, committed to exceeding expectations.

Our senior management team is closely involved in all aspects of the business, providing technical input and continuous support to the team on the ground.

Our dedicated team is continually looking for opportunities to provide added value for our clients and their projects. The guiding influences from senior management ensures BOS Civil is clearly focused on delivering high quality services and the best outcomes for our clients.

Our well-established systems and processes coupled with solid relationships, means many of our sub-contractors have been with us for several years and across numerous projects.

OUR LEADERSHIP TEAM PUT THEIR EXPERIENCE AND EXPERTISE INTO PRACTICE WITH A HANDS-ON APPROACH IN THE FIELD AND A FOCUS ON DELIVERING THE BEST OUTCOMES FOR OUR CLIENTS.



Ciaran O'Shea – Director and General Manager

Ciaran has over 25 years of experience in the civil construction industry. His extensive knowledge of construction best practice has been the key to the successful delivery of numerous high-quality construction projects throughout his career.

Ciaran is the contractor's representative on BOS Civil's projects and is responsible for programming and staging works, management planning, liaising with the Superintendent and stakeholder management.



Scott Maisey – Director and Operations Manager

Scott is a qualified Civil Engineer with more than 15 years of experience in the civil construction industry. He specialises in completing complex projects in major urban areas and brings to the team a dynamic and collaborative management style.

A leader in quality assurance, environmental management and procurement, Scott has delivered numerous projects for government authorities. He is responsible for developing and implementing the client's Construction and Environmental Management Plan (CEMP) ensuring each project is delivered safely, in accordance with the drawings and to specifications.



Paul Claxton - Director

Paul has been in the civil and building construction industry for over 20 years. His strong work ethic, commercial experience and wide knowledge of the industry adds significant value to current and prospective clients. He is client-focussed and thrives on ensuring their needs are met and expectations exceeded.

THE WAY WE WORK



Our dedicated and experienced team are integral to our success.

Currently, we directly employ:

- Project Managers
- Site Engineers
- Site Managers / Supervisors
- Contracts Administrator
- Accounts Manager
- Workshop Manager

We also have the ability to scale up our team quickly and easily to meet project requirements with a reliable network of sub-contractors.

OUR VALUES

Our values guide the way we work and do business every day.

Key to our success is our people. Our values provide the foundation for the way we operate and work with our clients, suppliers and each other every day. Together, our team has developed values which reflect our commitment to safety, service, quality, our environment and sustainability, our systems and team solidarity.

+ BUILT ON SOLIDARITY

We work collaboratively with our clients, employees and subcontractors to ensure team solidarity to achieve excellence. We believe in open communication to help our team learn and grow from our experiences together.

BOS Civil's employees are committed to living our values every day.

+ BUILT ON SERVICE

As a construction services provider, we pride ourselves on the delivery of the highest level of service to our clients, always. We work collaboratively to develop best practice solutions to ensure project goals and requirements are met.

+ BUILT ON SAFETY

Safety is our highest priority and underpins everything we do. BOS Civil is committed to ensuring our employees, subcontractors and clients go home safely each day, and the general public's businesses and lives are minimally affected by our operations.



OUR SYSTEMS

Our systems and processes are integral to delivering a quality service to our clients.

Our systems include:

- A Safety Management System
- A Quality Management System
- An Environmental Management System

APE Mobile is a 'real time' office-to-project, and project-to-project portal. With it, site teams can access drawings, specifications, complete daily diaries, JHA's/SWMS, upload photos, complete quality assurance documentation and other functions. Project Managers can view and upload information from the office and the site team can access it straight away. This efficient portal assists us to streamline our processes, reduce costs, stay on time and deliver quality services.

MYOSH is our online Occupation Health & Safety System. Here, sites can record incidents, hazards and site inspections.

BOS Civil's commitment to safety, quality and the environment is ongoing. Our 'BMS' (BOS Management System) is in line with ISO requirements and has been accredited for the following standards:

- ISO 45001:2018 Occupational Health and Safety
- ISO 9001:2015 Quality Management
- ISO 14001:2015 Environmental Management



QUALITY

Our dedication to providing a quality service at competitive rates results in complete client satisfaction.

Our procedures are tightly controlled and any issues are addressed immediately. This minimises unforeseen costs and maintains our high levels of client satisfaction.

We ensure quality through:

- Only using subcontractors with the required experience and proven records of completing superior work
- Only sourcing materials from approved suppliers
- Ensuring all necessary surveys are executed by qualified surveyors
- Providing detailed “as constructed” drawings and data at the completion of the works.

Further, we develop a set of Inspection Test Plans (ITP's) for each package of work. These are submitted for review and approval to the Superintendent who ensures correct materials are sourced and best construction and engineering practices will be adhered to, prior to the commencement of the project. All testing as required by the specification will be detailed in the ITP's and carried out and submitted to the Superintendent during the course of works.

We also maintain and undertake the required Quality Assurance records and inspections.





**BUILT ON SOLIDARITY
BUILT ON SERVICE
BUILT ON SAFETY**

WHAT DO YOU
Love ABOUT
North Perth?

NORTH PERTH COMMON



BUILT ON SOLUTIONS

BOS Civil Pty Ltd
ABN 16 618 643 477

9 Roberts St, Osborne Park WA 6017
08 6489 0300

admin@boscivil.com.au
boscivil.com.au



JOONDALUP
BUSINESS ASSOCIATION
Supporting Local Business Since 1994

